

### HAND BOOK



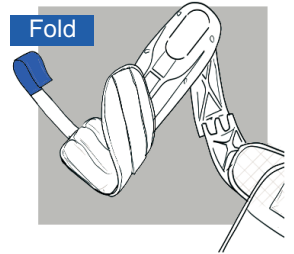
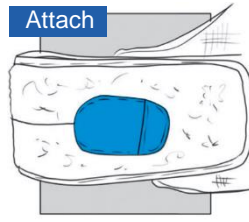
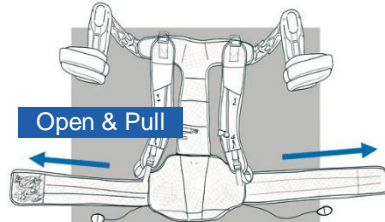
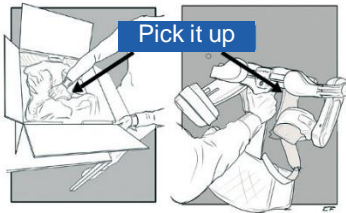
### WARNINGS



Set Active Box in lock position when you are not wearing MATE.



### UNBOXING & PREPARING MATE



### REGULATIONS & ADJUSTMENTS

Read the handbook carefully before wearing the device for the first time



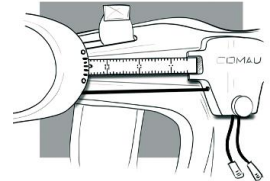
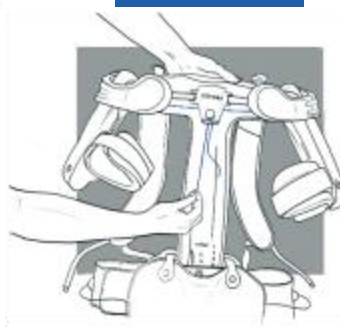
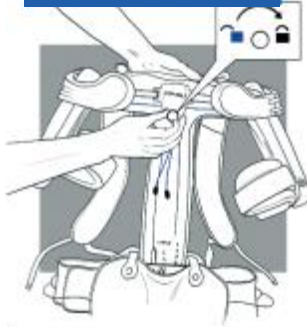
#### SHOULDER WIDTH

Loosen the knob

Pull/Release

Tighten the knob

Refer to handbook for adjusting level



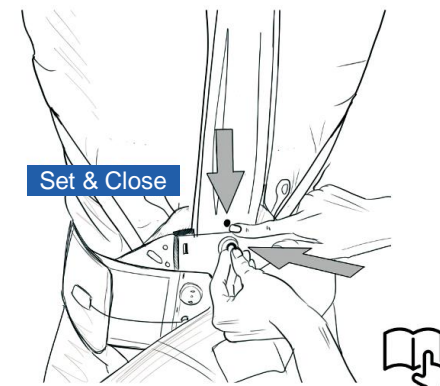
#### BACK LENGTH

Remove Velcro

Open & Pull

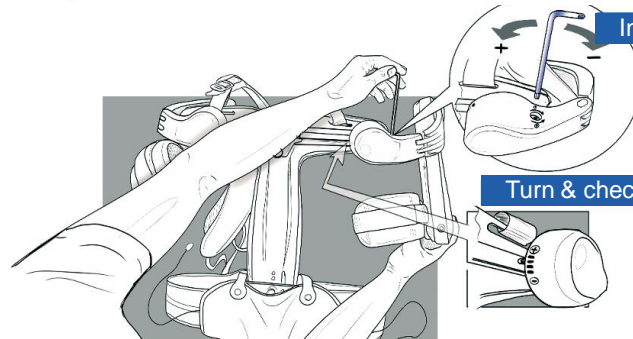


Set & Close



#### ACTIVE BOX ANGLE

Insert



Turn & check the level



#### ASSISTANCE LEVEL SETTING

Not OK

Do not jump from 8 to 1

Insert



Find your key 8mm in the Box

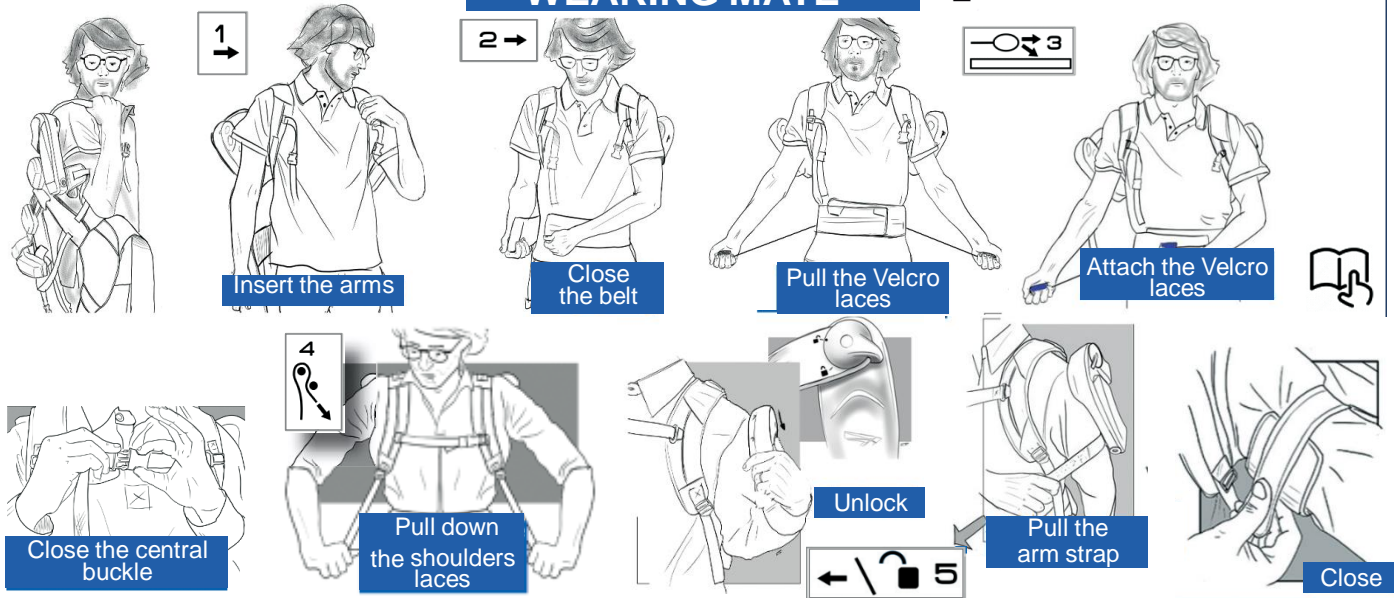


Refer to handbook for assistance level choice

Regulate from 1-8 level of assistance

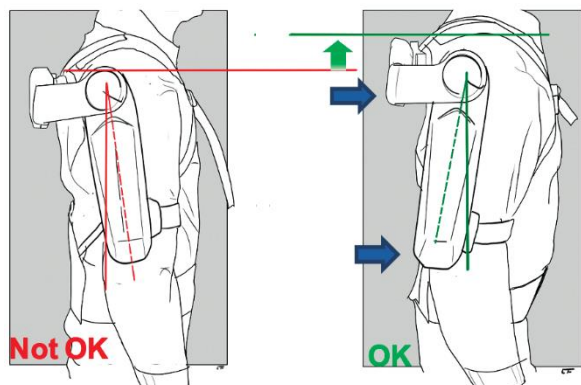


## WEARING MATE

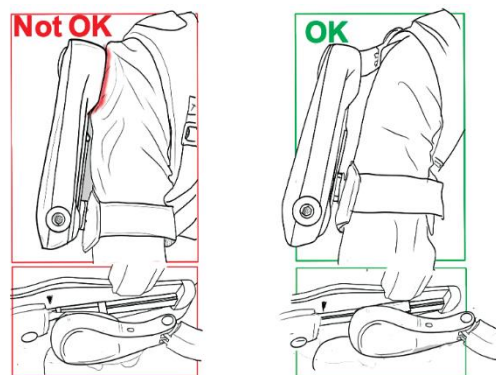


## CORRECT FITTING

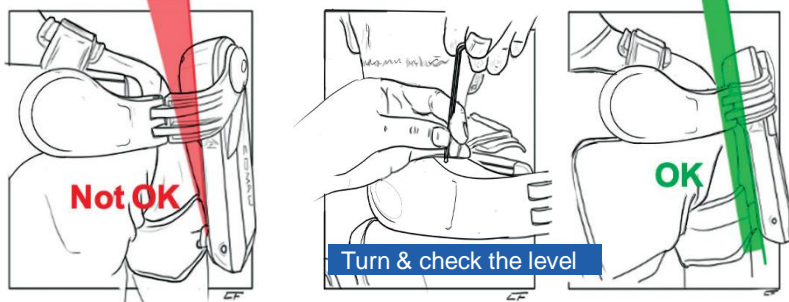
**1** Make sure the Active Box is aligned with the top level of your shoulder. Make sure also that the lumbar curve of the spine (MATE-xt leaning on the iliac crests) and the upper part of the rear support is touching the scapulae.



**2** Make sure it does not rub your shoulders

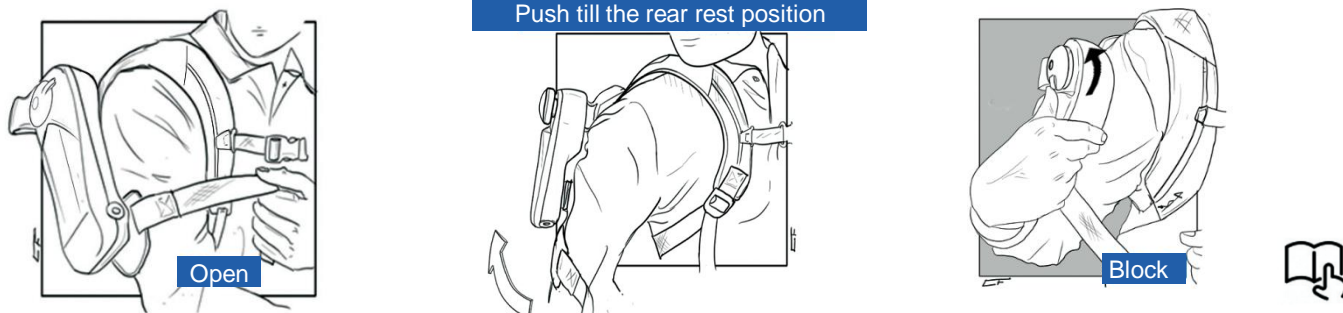


**3** Make sure the Active Box is parallel to the arm

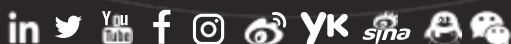


## UNWEARING MATE

Push till the rear rest position



Follow us



The information contained in this brochure is supplied for information only. Comau products in their standard version. Edition Nov 2021  
S.p.A. reserves the right to alter specifications at any time without notice for technical or commercial reasons. The illustration does not necessarily show the